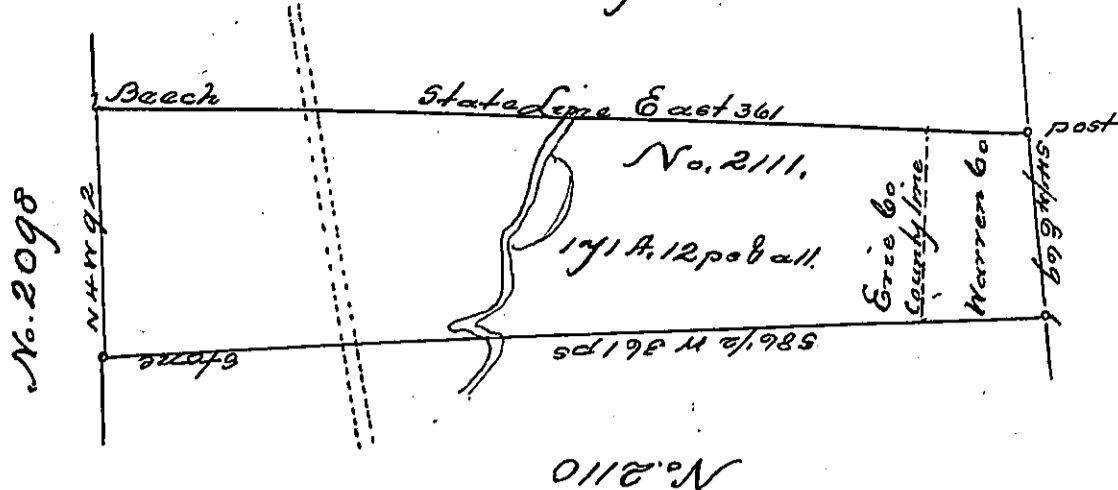


State of New York



A Draught of part of Donation Lot No 2111, Situate in the 10th Donation District in the counties of Erie and Warren and on the waters of Broken Straw creek, Surveyed 3^d May 1847 for Robert F King, by Virtue of his actual Settlement, residence and improvement, Containing one hundred and seventy one acres and twelve perches & arromance

John H. Millar Ad

I certify that the above is a true copy taken from the Survey Book of Erie County, June 3, 1865

Wm Benson, County Surveyor

To Hon
James P. Barr
Surveyor General.

IN TESTIMONY that the above is a copy of the original remaining on file in the Department of Internal Affairs of Pennsylvania, made conformably to an Act of Assembly approved the 16th day of February, 1833, I have hereunto set my Hand and caused the Seal of said Department to be affixed at Harrisburg, this twenty fifth day of July, 1905,

Isaac P. Pennington
Secretary of Internal Affairs.